

Shimpling News

Winter2019

Issue 119



CHRISTMAS MARKET
2PM – 4.30PM
SATURDAY 14TH DECEMBER
SHIMPLING VILLAGE HALL

An opportunity to purchase your Christmas door wreath and gifts, enjoy a cup of coffee/tea and a mince pie.

*Proceeds in aid of Alpheton
and Shimpling Churches*

Parish Council News

Parish Council News

Parish Council News

The Parish Council:

Mrs Liz Brunwin – Chair	01284 828122
Ms Katherine Haselhurst (Vice Chair)	01284 827370
Mr Daniel Sharpstone	01284 838394
Mr Gerry Shrimpton	01284 827219
Mr Ken Rush	01284 830180
Mr Colin Johnston	01284 827131
Mr Mike Atkins	07814 576401

Contact details for the clerk are:

12 Old Court, Long Melford, Suffolk CO10 9HA. (Correspondence and Appointment only)

E.mail: Shimplingpc@gmail.com

Telephone: 01787 370199/ 07986 990846

The Parish Council meet bi-monthly in January, March, May, July, September and November of each year.

Annual Parish Assembly – Reports presented by the Council and local groups / charities/ committees from within the parish. Members of the public can speak freely at this meeting, raise issues and ask questions relating to the reports.

Annual Meeting of the Council (AGM) – Election of officers of the council. Declarations of acceptance of office.

Parish Council Meetings – Council considers matters relating to finance, planning and the Parish. Additional extraordinary meetings are held when required.

Dates of meetings: Parish council meetings will be held on the following dates;

Monday 13th January 2020

Monday 16th March 2020 (moved from 9th March)

Monday 11th May 2020**

Monday 18th May 2020

**The Annual Meeting of the Parish, and the Annual Meeting of the Council will both take place on 11th May 2020.

Parish Council Website and Social Media and Notice Boards

The village notice boards by the Village Hall and bus stop have been refurbished thanks to good support from a villager and council information can be seen there. Alternatively, the village website is now being regularly updated again as well as our Facebook and Twitter account. Please follow us on Twitter and like our Facebook page:

Twitter: @shimplingpc

Facebook: Shimpling Parish Council

Website: <http://shimplingpc.onesuffolk.net>

What's been happening:

Recycling

Please remember that the parish council receives money from the paper and glass deposited in the recycling bins near the Bush PH. This income helps to run the council and therefore is a direct benefit to the village. Please keep recycling.

Ideas and Views needed:

Having a sustainable lifestyle is an important consideration in our current climate. With this in mind, we are looking into the possibility of a textile and/shoe recycling bank in the village. This will not only provide a place for clothes and textiles to be usefully recycled but will also raise important funds for the village.

We have been thinking for some time about creating a screen around the bottle and paper banks, we will also be looking at this in more detail in connection with the additional bank.

If you have any questions, queries or ideas, we would be delighted to hear them. Please contact Cllr Katie Haselhurst on kh.shimpling@gmail.com or the Clerk, Stuart Palmer on shimplingpc@gmail.com

Playground

Following the annual inspection, work was carried out at a cost of £720 for the replacement of a worn spring on the Aerial Runway and adjustment to the seat. It should be noted that the play equipment is designed for children and youths only.

Public and School Transport

Despite concerted efforts by the Parish Council (PC) with the County Council and suppliers the village has now lost the 375 service in the village and the ability to use the school bus. The PC will continue to petition and try to influence authorities in an effort to replace or reinstate the service. District Councillor Michael Holt has asked that all those affected by the changes to the school bus service/passes should contact him on

Michael.holt@babergh.gov.uk so that he can canvas the cause on your behalf.

District Councillors

Following the elections on 2nd May, Current District Councillor James Long stood down. The Parish Council sent thanks on behalf of the village. New District Councillors can be contacted as follows:



Michael Holt

Phone: 01787 281712

Mobile: 07801 766813

Bus. email: michael.holt@babergh.gov.uk



Stephen Plumb

Phone: 01787 280890

Bus. email: stephen.plumb@babergh.gov.uk

Parish Council Training

The Parish Council received initial and development training from Suffolk Association of Local Councils to ensure professional development on 23rd October.

Planning: There have been 2 new applications since our last newsletter in August. Others are updated below:

Application	Shimpling PC Comments	Planning Authority Decision
Maltings Farm, Shimpling	Objected to the application	Refused – Appeal dismissed
6 Slough Hill, Shimpling	No issues raised	Approved
Cracketts, The Street, Shimpling	Appeal supported	Awaits
Lyndhurst, Little Chadacre	No issues raised	Approved
Land North East of Gents Lane (Appeal)	Objected to by PC	Appeal dismissed
Plot adjacent Gents Lane	Objected to application	Application Withdrawn
Mount Farm Barns, Shimpling	Supported application	Prior Approved
Rye Cottage, Bunkers Hill	Responded for more information	Awaits

ALTERNATIVE BUS ARRANGEMENTS TO BURY ST EDMUNDS

We are hoping that Suffolk County Council may have a change of mind about the 375 bus service but in the meantime they have informed us that Connecting Communities offer a limited bus service from Shimpling to Bury although these must be booked in advance. Bookings can be taken up to two weeks in advance.

To book, call 01638 664 304

Unfortunately bus passes cannot be used for this service.

To use this service, you will be required to pay an annual £15 membership fee and the round trip to Bury St Edmunds costs £7.30.

PLEASE SPREAD THE WORD TO ANYONE YOU KNOW WHO MAY WANT TO USE THIS SERVICE AND WHO MAY NOT HAVE SEEN THIS MESSAGE

This is a new service for Shimpling so if you have any issues booking or wish to feedback any information , please do not hesitate to contact

Liz Brunwin, Chair of Shimpling Parish Council on 01284 828122 or via lb.shimpling@gmail.com

Christmas Market - Saturday 14th December - 2 until 4pm

Below are photos of fresh wreaths made last year for the Christmas Market. If you would like to preorder one please email lizbrunwin@hotmail.co.uk. Prices are £10 for the medium size and £15 for the large size. A selection of different designs will be made up for collection at the Christmas Market on a first come, first served basis.





CAROL SINGING AROUND THE VILLAGE FOLLOWED BY BEER AND CAROLS AT THE BUSH

Friday 20th December 2019

**Get in the festive mood - join us at the
Village Hall at 6.30pm for carol
singing around the village finishing at
The Bush for beer and more carols.**

Children welcome

***A collection will be taken in aid of the
Alpheton and Shimplingthorne Church Fabric Fund
and the Bahamas Hurricane Appeal***

I'm so sorry

I'm so sorry to the lovely family with their buggy for the doll.
They were out for a family stroll.

They didn't know, they didn't see, they don't have one yet in their family.

I'm so sorry that in being polite,
the teenager who stopped was left with a plight.
He didn't know, he didn't see, he was probably thinking about pizza for tea.

I'm so sorry to the elderly chaps,
who were out walking in Shimpling with hats and maps.
They didn't know, they didn't see, eye's both focused on "what's in the tree?"

I'm so sorry to the couple who regularly run,
they both train profusely in the name of fun.
They didn't know they didn't see, they were both competing to get a PB.

I'm so sorry to the young AirB&B.ers attending "The Wedding",
hangovers to be walked off before home they should be heading.
They didn't know, they didn't see, they were reliving the drunken reverie.

I'm so sorry to our cutters of grass,
who enable us on the footpath to pass.
They didn't know, they didn't see, Luckily for them, eyewear is compulsory.

I'm so sorry to those with problems to erase,
who walk to think on all sorts of days.
They don't know, they don't see, they are hoping for their headspace to be free.

It wasn't me, I planned my trip,
boots, phone lead, bags, pockets closed, zip.zip,zip
I do know, I do see, I've stopped counting now after 23!

I'm so sorry for YOU,
that YOU don't know,
the Parish Council have really tried to inform YOU though.

I'm sorry that YOU don't have time to prepare,
but I've not yet seen YOU walking with feet that are bare.
YOU don't know, YOU don't see, YOU don't understand our misery

I'm so sorry to tell YOU how everyone feels,
about our shoes, our trainers and our wheels.
YOU now know, YOU must see, the need to keep the paths free of
dog debris.



Thank you and
apologies to any
poets in the
village

'You'll have to wait till we get home, I've run out of bags.'



Speeding Grace

'SLOW DOWN!' flashes ahead of you in yellow, together with a number representing your speed as you approach a 30mph zone, or even perhaps when you are within one. It's tempting to find these speed indicators a bit irritating. They seem to be flashing in our faces everywhere; they are unsightly, and it can feel patronising being told what to do by a machine. At the same time I do find them helpful. It is easy to unwittingly slip above the speed limit in today's cars which are so smooth and powerful; and the speed limits are there for very good and well-researched safety reasons. If you are a cyclist there is an added advantage ... you can use speed indicators to assess your sprinting speed!

I recently reflected on what happens when you reduce your speed to the mandated limit. Whereas the machine would be entitled to display, for all to see: "YOU SELFISH IDIOT, DON'T SPEED AGAIN", in fact it rather politely says "THANKYOU"? Rather than condemning those who speed, there is an appeal to our better natures, encouraging us when we drive lawfully and more considerately.

This is a bit like God's heart of grace to us. He warns us about sin in order to stop us hurting ourselves and hurting others. If we repent when we step over the mark, forgiveness is possible, and we are encouraged to move forward in a more loving way. Rather than living our lives feeling condemned as 'idiots' – in Christ we are encouraged to look ahead with faith and hope, whatever might be behind us.

I hope that you will be able to get safely to one of our services this Christmas, and taste more of God's loving grace ... grace which he gave to a world which does seem to displaying quite a lot of idiotic behaviour at the moment. Wishing you grace and peace this Christmas.



Rector: Rev'd Matthew Lawson 01787 310845,

Churchwardens:

Charlotte Blyth 01284 827008

charlottefblyth@btinternet.com

www.alphetonandshimplingchurches.org.uk

Benefice Services

Sunday 1st December

10.30am—Family Christingle at Long Melford

5pm—Lights of Remembrance at Alpheton

6.30pm—Advent Carol Service at Long Melford

Sunday 8th December - 9am at Shimpling

Friday 20th December— 6.30pm Carol Singing

Ending at The Bush

Sunday 22nd December

4pm—Carol Service at Alpheton

6.30pm—Carol Service at Long Melford

Christmas Eve—Tuesday 24th December

3pm—Crib Service at Long Melford

6pm—Carol Service at Shimpling

Christmas Day—Wednesday 25th December

10.30am—Family Communion at Long Melford

Sunday 12th January

Tea at 3—Shimpling Village Hall

Sunday 26th January—9am at Shimpling

Sunday 9th February

Tea at 3—Shimpling Village Hall

Sunday 23rd February—9am at Shimpling

There is provision for children at all 10.30am services,

Most services include communion.



HELP!

If you feel that you would like to help our loyal band of helpers at St George's (flowers, cleaning etc) you would be more than welcome.

Please contact

charlottefblyth@btinternet.com

For more events and services, don't forget to look at our website www.alphetonandshimplingchurches.org.uk.
(see also www.longmelfordchurch.com).

Electronic Version of The Shimpling News

The Shimpling News is now available on the Village Website so if you would prefer to receive an email informing you when the latest issue is available, rather than have a printed copy delivered to your door (by the dedicated local Distribution team !) please let me know so that we can reduce the number of printed copies we produce. This will all help to reduce the cost to the Parish Council and less printing means less carbon resources used— a win/win situation ??

<http://shimplingpc.onesuffolk.net/assets/Newsletters/Autumn-2019.pdf>

Email: sarah@slsconsulting.org.uk to register for notifications



Connect Baby and Toddler Group - Songs, Story, & Craft

Monday mornings term-time 9 -11am, St. Catherine's Church, Long Melford, CO10 9JU

Pop in for a drink and a chat while your little ones play.

 @longmelfordconnect

www.longmelfordchurch.com

*... providing a solid
foundation for the
adventure of life*



EVERY SUNDAY 10.30 – 11.45am*

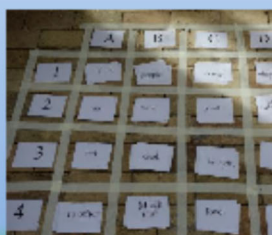
Holy Trinity Church Long Melford

For children aged 4 – 11 years

All welcome; free admission

You are welcome to stay or drop-off

Game ...



Craft ...



Story ...



Parents & carers welcome to stay with kids, join the main service, or pick up at the end.

If coming for 1st time please arrive early to register - part of our Safeguarding Policy.

Any questions 01787 310 845 / nickyisfound@gmail.com.

* Except 1st Sunday in the month which is a family service.

YOUR VILLAGE NEEDS YOU!

The Annual Village Clean Up Morning will take place on **Sunday 15th March** at 11.00am from the Village Hall.

We look forward to seeing you there.

We have some high vis vests and litter picking sticks but if you have your own high vis vest and gloves, please bring them along

Under 18s must be accompanied by an adult





Tea @ 3

Sunday 12th January and
Sunday 9th February 2020
Shimpling Village Hall
Tea and cake,
chat and reflections

Alpheton and Shimpling Churches

The Hallifax Trust

Grants available for young people at college or Uni, must be under 25, have attended the primary school serving Shimpling and Alpheton, or have parents currently living in Shimpling. Funding is also available to help with travel costs for 6th Formers and for other village projects.

Help us to Help our Children

If you are interested in making a donation or legacy,
please get in touch.

Contact Jayne Schofield jas.65@btinternet.com

01284 828322

jennypine@aol.com 01284 827073

(Registered Charity No 310396)

SHIMPLING & ALPHETON WI

In July our speaker was Angie Jones telling us about walking in the slow lanes of Suffolk and of the many interesting people she had met as she walked. In September we spent a very pleasant and interesting afternoon at Hedingham Castle with a very knowledgeable guide. In September we enjoyed listening to Rory O'Brien from the Theatre Royal in Bury St. Edmunds telling us all about its history including when it was used as a bottle store for Greene King. In October our speaker was Paula Baker of Suffolk Prickles Hedgehog Rescue. Although she is a teacher the hedgehogs keep her extremely busy and it is amazing that she is able to fit so much into her days.



November brought the 70th Anniversary of the founding of Shimpling & Alpheton WI in 1949. The Hall was decorated with appropriate bunting and even the plates and napkins were decorated with 70s. There was a super spread for refreshments and the star turn was beautifully iced delicious cake made by Ro Northcott. Many former members were invited and it was lovely to catch up with so many of them.

It will be back to normal for our next meeting on 10th December at Shimpling when the speaker will be Oggie Weldon on the subject of Couture Millinery. The competition will be for a favourite hat. As usual visitors will be most welcome.

Paddy Trevelyan



We have started up a Painting Group
in Shimpling Village Hall.

We aren't teachers, but we have been
successful in selling our art and craft work
and can pass on tips etc.

We enjoy painting and chatting.

Beginners are welcome and any medium can be used.
The cost of the hall will be split between those attending.
Just come along with your paints and paper and have fun!!

Time 2 – 4 pm Wednesday afternoons.

For more information please call:
Diana and David 01284 827635

Forthcoming Films at Alpheton Village Hall

Dec 17th Stan and Ollie (Story of Laurel & Hardy)

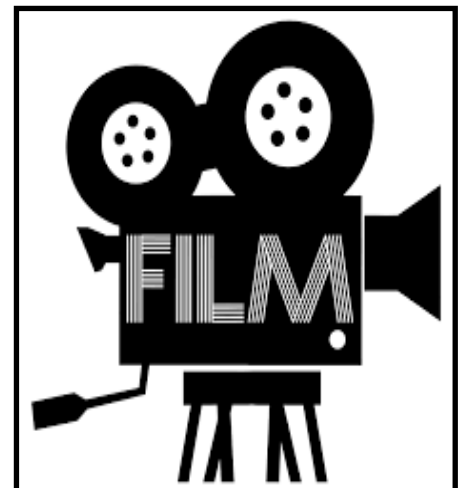
Jan 21st All Is True (Story of Shakespeare)

Feb 18th Fisherman's Friends

(Story of Cornwall's fishermen)

March 17th Rocketman (Story of Elton John)

7.30pm Start, £4 entrance including tea/
coffee & biscuits, licenced bar





The Undergardener's Diary

*Growing Sweetcorn in Shimpling
– a cautionary tale*



Corn on the cob. Freshly picked, lightly boiled, dripping with butter – there's nothing better. Every year, when the risk of frost has passed, the Head Gardener gives me the seedlings to plant out. They're wind pollinated so arranged in a block, in a sunny, sheltered position, under-sown with squash to make best use of the patch and with lots of compost dug into the soil. Keep the roots covered, the plants well-watered, watch them grow and thenharvest late summer and enjoy. That's the plan. But let me tell you about 2018 – a very hot and very dry summer. The sweetcorn needed a lot of watering but the crop looked promising and, mid- September, the Head Gardener checked for ripeness – pull back the husk a little, pierce a kernel and squeeze. If the liquid which squirts out is watery it's not ripe, if it's like paste the corn is past its best, if it's creamy – yippee, twist, pull and head for the kitchen. Well, mid-September it was not quite ripe – 'a couple more days should do it' said HG. So two days later with sweetcorn for lunch in mind, down to the veg patch andDISASTER! It looked like a tornado had struck – every sweetcorn plant knocked down AND every cob eaten. BADGERS! No doubt about it. A burrow under the fence in the front garden, divots all over the lawn where it/they had snouted up worms for a starter before going on to the main course, **my** sweetcorn, then a burrow under the back fence to leave.

I repaired to the Bush to drown my sorrows and seek sympathy and advice. Although I got very little of the former the agricultural fraternity helpfully offered a number of solutions and after a pint or two things didn't seem so bad, the advice seemed a bit radical and I thought, well, badgers will be badgers. They've had a bad press with the bovine TB. Live and let live, give and take.....

I improved the defences in the garden and tried again. It was a better summer this year - not so hot nor so dry and

another promising crop developed. Mid-September HG tested for ripeness and picked and cooked one cob – lovely.... but..... not quite perfect. 'A couple more days' she said .



Then....DISASTER!AGAIN!

How did they know it was ripe? Did they put a note in the diary last year? 'Mid-September – nights drawing in, fatten up for winter, check sweetcorn on Mill Hill' Does Monty Don have this trouble? What does the RHS have to say? - 'Beware of slugs and birds which may damage seedlings' – no mention of badgers. Now this is not sensible Mr Badger from Wind in the Willows. This is delinquent Badger. There's no give and a lot of take in our relationship. The gloves are off for 2020 – I'm going to build a wall.

Note from the Editor—this year we resorted to 6 strands of Electric Fence Once we had picked all the ones we wanted we took it away and left them to clear up!



The Bush Inn, Shimpling



The Bush Inn Public House is a family run business close to the historic market town of Bury St Edmunds and tranquil Lavenham. The Bush dates from the 16th century and retains many of its original features. In the cold winter months, you can keep warm and cosy by the inglenook fireplace whilst enjoying one of our exceptional guest ales or a glass of wine from our varied selection. During the long summer days why not enjoy the peace and tranquillity of our enclosed garden, perfect to enjoy some of our wonderful food and beverages as the evening draws in. The garden provides a safe, spacious environment for all the family to relax and enjoy their visit.

The Food

We offer traditional home cooked food using all locally sourced fresh ingredients that are delivered daily.

Dawn – our Landlady and Chef – has been creating amazing dishes for over 17 years and to that effect our menu offers an array of delicious meat, fish and vegetarian options to cater for all tastes. We have daily special boards and a range of speciality coffees and hot beverages throughout the day to finish off your meal. All our desserts are homemade and change daily. We are sure there will always something on the menu that will tickle your taste buds.

Disabled Access, Family Friendly, Dog Friendly, Real Fire

Call us on 01284 828257 to make your reservation

Shimpling Village Hall Committee

Thanks to all those who came along to support Vernon's quiz on November 2nd. In spite of a slow take up, it was a very good evening and really nice to see some new faces - hope you'll join us again.

The next Village Event will be our Christmas Meal, although it will be held on January 12th. at The Bush. So please put this date in your diaries. We will confirm the time, menu, prices booking details nearer the time.

We will soon be looking to arrange events for next year, so if you've any ideas, please let us know. As always, we continue to look for new members to join the committee, which meets approximately every 6-8 weeks. At the present time we are also looking to recruit a new treasurer, as Stan, who has done the job for a number of years, would like to stand down.

If you can help us in any way, please contact Marian 828187.

Don't forget the hall is available, not only for big events, but if you would like to make use of the table tennis, or just some space for a couple of hours, please contact Stan (828866) or myself for availability.

With Best wishes for Christmas and New Year from all the members of the VHC

Marian Peck
Chair..

Copy for the Spring 2020 issue is required by 20th Feb 2020

Submit copy (preferably in A4 WORD) format to:

sarah@slsconsulting.org.uk

Vine Cottage, Gents Lane, Shimpling, IP29 4HP 01284 828035

Village Hall Hire Charges

	<u>Summer</u>	<u>Winter</u>
Half Day—Morning or afternoon up to 6pm		
Mon-Thurs	£20	£25
Fri-Sun	£26	£31
Evening from 6pm to Midnight		
Mon-Thurs	£26	£31
Fri-Sun	£38	£43
Concessions (Subject to Approval)		
All sessions	£18	£20
Hourly Rate per hour (max 3 hrs)		
Mon-Thurs	£5	£6
Fri-Sun	£6	£7

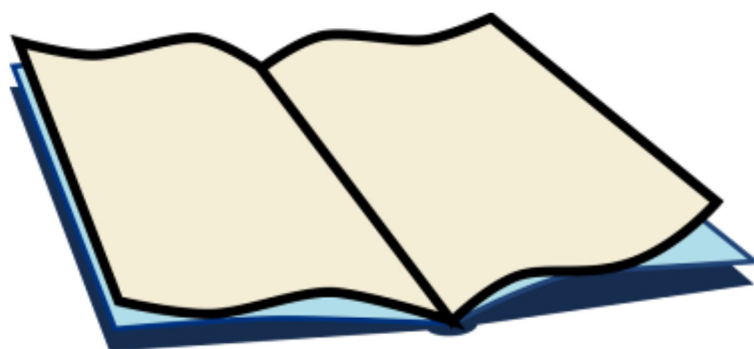
Sessions AM 8am—1pm
 PM 1pm—6pm
 Evening 6pm—midnight

Summer period 1st April to 30th September

Winter period 1st October to 31st March

Rates available to village residents & for village events.

Hire Enquiries – Contact Stan Milsom on 01284 828866



Would you be interested in
receiving your copy of the
Shimpling Magazine by
email or downloading it
from the Parish Council
website?

If you are, please email lb.shimpling@gmail.com

BLUEBELL BUILDING NOW OPEN

We believe in a fun and active path for early years education, allowing the children in our care to develop at their own pace, in a safe environment with activities they love.

We are located within the grounds of All Saints' Primary School in Lawshall, Suffolk.

Our mission is to help each child make the transition from preschool to reception and onwards into the main school with confidence and ease.

Accepting children from the term after their 2nd Birthday.

Full day sessions available 8:30 - 3:30



Chiropodist

Established & locally based

(Alpheton)

- Quality foot care
- Caring service tailored to your individual needs
- Expert advice
- Experienced with additional nursing qualification

If you are unsure as to whether chiropody is for you, please do not hesitate to contact me.

Elizabeth Gibson

MSSCh MBChA

Health & Care Professions
Council Registered
• Reg. No. CH20192



CLINIC

Casabella

Hall St. Long Melford
CO10 9HY

T: 01787 370300

HOME VISITING PRACTICE

Long Melford, Sudbury, Clare
& surrounding villages.

T: 01284 827380 M: 07798 806184

PEST PROBLEMS SOLVED BY LOCAL SPECIALIST

Anglia PEST MANAGEMENT

DOMESTIC • COMMERCIAL • AGRICULTURAL



insects✓ birds✓ moles✓ rabbits✓ rats✓

Based in Lawshall
Contact Tim Cox

- 24hr call out / 7 days a week
- Contract or individual treatments
- Traditional methods with modern technology
- Discreet service - unmarked vehicles
- RSPH and BCPA trained and qualified
- NPTA member
- £5million public liability



01284 831 042
07776 205 346

info@angliapestmanagement.co.uk ■ www.angliapestmanagement.co.uk

BOTTLE & PAPER BANKS

By placing your empty bottles and papers in the bins provided near The Bush Pub, we receive money for the village community. Keep these telephone numbers handy so that if the Banks are full you can help by phoning and having them emptied.

BOTTLE BANK— 01842 820804 PAPER BANK—01473 830948

Keeping in touch.....

If you wish to receive email communication about what is going on in the village please email

lizbrunwin@hotmail.co.uk

who will add you to the circulation list.

FOR SALE

Panasonic Viera

TX-P42VT30B 42"

3D 1080p HD Plasma Television

Accessories Remote, 2 pair of 3D glasses ,
Wifi Dongle

£100 ono

Contact Fred & Joan Raison

01284 830603

“Incredibly tender and juicy... utterly delicious”
Tessa Allingham – Food Writer

Shimpling Park Lamb

The best organic meat born, raised and butchered within 5 miles

Small or large boxes available direct from the farm

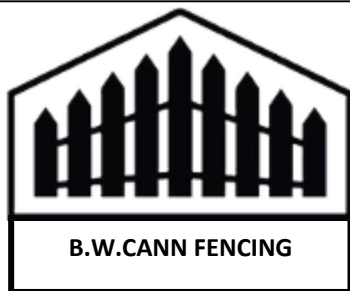
Info@shimplingparkfarms.com

www.shimplingpark.com

Or for single pieces, ask for it in your local butchers

**Ruse and Son Long Melford, Lavenham Butchers,
and Humphrey and Sons Clare**

“Nothing compares in quality and flavour”
Regis Crepy. The Great House



B.W.CANN FENCING

Est. over 30 years

Industrial or Domestic

'No job too big or too small'

***All work undertaken, including,
Paddock, Chain Link, Panels, Gates
and Palisade and much more!***

**For a FREE quote
Call or email today on....**

Landline: 01284 831 073

Mobile: 07949 107 920

Email: tool-den@hotmail.co.uk



Do you need your lawn mowed,
car washed, odd jobs done or
babysitting ?

If so, **James Ross** 17 years old,
is available to do gardening
and/or odd jobs in the summer
holidays from the end of
June.



Please call/ text James on
07814 239359 or 01284
828288

COFFEE POT



Looking for good company, tea or
coffee, and a selection of tasty cakes
and sandwiches?

Then join us at Coffee Pot, which is
held at Alpheton village hall on the last Tuesday of
each month from 10:30 to midday.

For just £3 you get good food and conversation, and a
chance to catch up with what's going on in
Alpheton, Shimpling and the villages around

Marquee for Shimpling

*The Marquee 20ft x 40ft (6.1m x 12.2m)
is available for loan to
anyone in the village of Shimpling for functions
free of charge.*



*David Campan, Stuart Campan and John Reynolds would be happy to **erect/dismantle the Marquee free of charge for communal events** such as the Church, Village Hall, Pub, Fêtes, but would charge modestly for their time in case of private functions such as weddings, parties.*

Please contact gabriel@clara.net at Thatch End to book the Marquee.

ARGENT GARDEN MACHINERY SERVICES



Servicing and repairs to all types
of machines

Parts supplied
Local Collection and Delivery service available



Contact Luke on
Tel: 01787 372885
Mobile: 07791 281855
argent1985@hotmail.co.uk
redrose993@hotmail.com



LARK VALLEY YOUNG FARMERS' CLUB

*Are you bored of staying in on a Friday night?
Looking for something fun to do?
Aged between 10 and 16?*

Lawshall Village Hall, Fridays, 7.00-9.00pm

Take part in competitions: Make new friends

Be part of a national organisation that makes a difference
- And you don't have to come from a farming background!

*More information from County Office on
01473 785547
office@suffolkyoungfarmers.com*



**Ollie's Pet Care
(Oliver Schofield)
Covering Shimpling and Alpheton**

For the past 5 years Ollie's Pet Care has helped many pet owners in the village of Shimpling, from a one-off feed to a months pet care.

I offer a bespoke service.

Bins, post and small gardening jobs can also be considered. If you are going away for a night, or going on holiday, contact me and I may be able to solve your pet care problem !

**Rabbits, Hamsters, Guinea Pigs, Fish
Birds, Dogs, Cats, Chickens etc**



To find out more please contact me
01284 828322 / 07813 762799
scoi14@hotmail.co.uk

**Your Charity needs
you....**

We are offering the village hall free once a month to anyone who wants to put on a fund raising event for their favorite charity. We can also help with organising and promoting your event. Contact Bernard Essery for more details.

Bernard.Essery@gmail.com

Tel 827196





**The ultimate workout for Mind & Body
Suitable for all levels of fitness
Women & Men Welcome !**

**YOGALATES at
Shimpling Village Hall
Tuesdays
Chair Based Pilates
2.00 to 3.00pm
Mixed Ability
4.30 to 5.30pm**

For bookings or more information
please contact Ramona Bryson
Mob 07878 324745 or

Email ramonabryson@hotmail.com

*If pregnant please contact before booking

** It is advised that anyone with prior
injury or moderate back pain should
consult your GP before attending

- Fusion of Core Firming Pilates, with Stretching Postures & Meditative aspects of Yoga
- Strengthen, Tone & Stretch yourself to a Leaner You
- Strengthens Lower Back & Core muscles
- Focusing on Posture, Flexibility & Balance
- Safe & Progressive exercises





Singing Flute, Piano

*(Also Celtic Harp, Violin, Ukulele, Guitar and Viola)
Lessons in Shimpling Suffolk*



Qualified, experienced, patient and enthusiastic teacher with CD recording facility

*Beginners to professionals welcome
for leisure, audition, performance preparation and/or
Associated Board of the Royal Schools of Music exams*

Gift Tokens Available

*Telephone **Adriene** on
07760 238462*

www.musicteachers.co.uk



*GTCL. LTCL (Sg/T; Fl/T; Pf/T) Teaching Diplomas
ARCM (Sg/P) Singing Performance Diploma
Associate of the Royal College of Music in Singing
Member of the Association of Teachers of Singing*

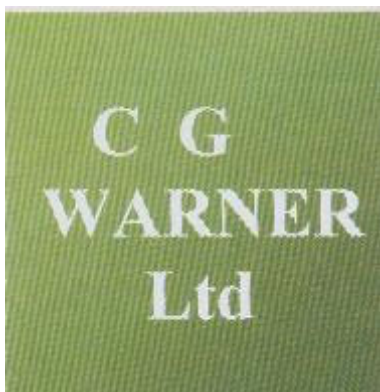


BABYSITTER AVAILABLE



Friendly, mature and responsible 18 year old,
available for baby sitting in the Summer holidays .
References available.

Please call Annabel on 01284 828288 or
email annabel.ross@dsl.pipex.com



DOMESTIC & COMMERCIAL CONTRACTING

**1 Cordell Cottages,
Little Chadacre, Shimpling,
Bury St Edmunds,
Suffolk IP29 4HL**

Tel 01284 828774 Mobile 07971 248320

Email: cgwarner@btinternet.com

- Hard & Soft Landscaping
- Patios & Driveways
- All types of Domestic, Agricultural & Commercial Fencing
- Seasonal Hedge / Garden Maintenance



- Ménage Construction
- Supply & Installation of Grass reinforcement matting
- Lawnmower servicing & repairs
- Grass Cutting
- Paddock Maintenance

- Stump removal
- Firewood
- NPTC qualified Tree Surgeons
- Woodland Management
- Tree / Hedge Planting



Fully Insured

40 years + experience

FREE NO OBLIGATION QUOTES



Oakwood Gardening Services

Based in Shimpling

All work undertaken, including, lawn cutting, hedge cutting, strimming, pruning, weeding, garden clearance, leaf clearing, furniture maintenance, power washing, fence repairs, grave tending and much, much more!

High Standard Reliable Gardening Service

For a Free Quote

Call today on



01284 827 604 | 07903 487 662



oakwoodgardening@gmail.com

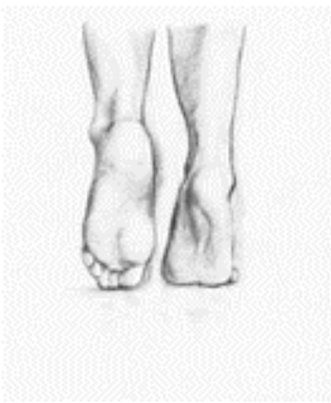


www.oakwoodgardeningsservices.co.uk



Oakwood Gardening Services

Fully insured | Enviroment Agency waste carriers licence



Claire St John

Dip (Hons) WMSch ChPod

Assoc of Inst of Chiropody & Podiatry
Make your feet happy again

Professional, friendly, reliable Foot Health
Practitioner with 15 years' experience

Regular or one-off appointments in the comfort of
your home.

Treatments include:

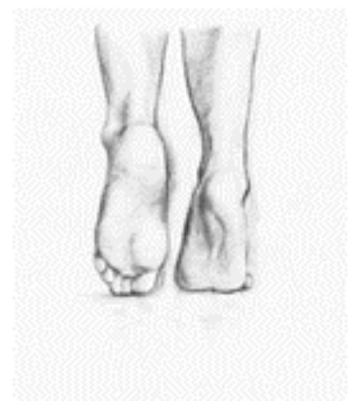
Hard skin removal
Nail cutting/trimming
Cracked heel care
Corns/Verruca's removed
Cream/Massage treatment

Please call today to arrange an appointment:

W: 01359 258 227

M: 07780 638 188

E: claire.stjohn@icloud.com



Hartest Farmers Market



Saturday 7th December 2019
10-12.30—Hartest Institute

Locally produced Pies, Bread, Cakes, Meat, Eggs & Crafts. Light Refreshments available !

For more information contact Judy Stevens
01284 830551 judystevens25@gmail.com

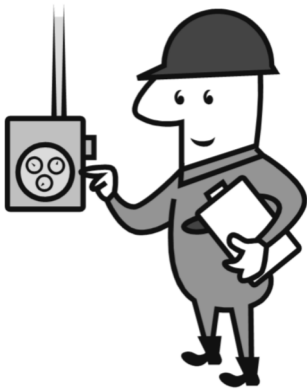
HATTERS CHIMNEY SWEEPS UK

WWW.CHIMNEY-SWEEP.ORG.UK

CHIMNEY & FLUE SWEEPING FROM £45
INTRODUCE A FRIEND AND EARN A £10 DISCOUNT
STOVE MAINTENANCE
CHIMNEY REPAIRS
CCTV FLUE INSPECTION

01787 281979





Domestic, Commercial & Agricultural Electrical Work Undertaken

Including rewires, new builds, extensions,
Economy 7 heating, new consumer units,
testing and inspection for insurance purposes,
smoke detectors, TV & phone points, outside
lighting, low energy & LED lighting, Burglar alarms supplied
& fitted.

Part P recognised, 17th Edition Regulations qualified

All work guaranteed by the ECA

For competitive rates, a personal service and
good quality workmanship contact:

Kevin Seggie Electrical Services

Beechwood Cottage, Bury Road, Lawshall, IP29 4PJ
01284 830786 / 07768 108157

HAPPY TO HELP Garden Services



Call David on 01284 828127



We are two brothers who are passionate about the work we do, to please all with the quality of work and skill we provide, we are only happy if the customer is happy. Between us both we have extended experience in the building trade, we have worked in the past with a small building company building high quality and top spec houses, with over 15 years of experience and employment, (which we were very grateful for) we decided the time was only right to please others under our own name of Reynolds Building & Garden Services.....

These are a few of the services we provided,



plastering, tiling, ground works, landscaping, garden design and build, small extensions, and a small amount more.....

View our portfolio at www.Reynoldsbgs.co.uk

Contact us on; Mobile 07731451209

Office 01284 828621

Woodcot

Garden Services

**Lawn Cutting
Hedge Trimming
Patio Cleaning
Garden Clearance
&**

General Garden Maintenance

Contact Chris Cornish on

Tel 01284 828809 - Mobile 07880 976137

c.cornish123@btinternet.com

Woodcot, The Street

SHIMPLING





KARENZA JACKSON OPEN STUDIO

AT SHIMPLING HOUSE
THE STREET
SHIMPLING
BURY ST EDMUNDS
IP29 4HS

SATURDAY 14TH DECEMBER 2019

10AM - 4.00PM

Come and see my new studio - All welcome
Watercolours, Mixed Media, Collage and
Monoprints

Artwork and cards for sale

01284 827213/07760304887

email: karenzajackson@hotmail.com website: www.karenzajackson.com



TASTER ART DAY

FRIDAY 6TH DECEMBER 2019

WITH ARTIST KARENZA JACKSON

COME AND TRY MONOPRINTING AND COLLAGE
IN MY NEW STUDIO

10.00AM - 1.00PM

£40.00 INC MATERIALS

book now - places are limited to 6

SHIMPLING HOUSE
THE STREET
SHIMPLING

BURY ST EDMUNDS
IP29 4HS

01284 827213/07760304887

karenzajackson@hotmail.com

www.karenzajackson.com