

Shimpling News

Summer 2020

Issue 121



THANK YOU X

Please Note...

**All events and advertisements
mentioned in the Shimpling News
are subject to the
Covid-19 Government Restrictions
in force
at the time of accessing them.**

Parish Council News

Parish Council News

The Parish Council:

Mrs Liz Brunwin – Chair	01284 828122
Mrs Katherine Haselhurst (Vice Chair)	01284 827370
Mr Gerry Shrimpton	01284 827219
Mr Ken Rush	01284 830180
Mr Colin Johnston	01284 827131
Mr Mike Atkins	07814 576401
Mrs Nathalie Brown	07961 947497

Contact details for the clerk are:

12 Old Court, Long Melford, Suffolk CO10 9HA.

(Correspondence and Appointment only)

E.mail: Shimplingpc@gmail.com

Telephone: 01787 370199/ 07986 990846

The Parish Council meet bi-monthly in January, March, May (AGM), July, September and November of each year.

Annual Parish Assembly – Reports presented by the Council and local groups / charities/ committees from within the parish. Members of the public can speak freely at this meeting in May, raise issues and ask questions relating to the reports.

Annual Meeting of the Council (AGM) – Each May, Election of officers of the council. Declarations of acceptance of office.

Parish Council Meetings – Council considers matters relating to finance, planning and the Parish. Additional extraordinary meetings are held when required.

Dates of meetings: Parish council meetings will be held on the following dates;

Monday 13th July 2020

Monday 14th September 2020

Monday 9th November 2020

Parish Council Website and Social Media and Notice Boards

The village notice boards by the Village Hall and bus stop have been refurbished thanks to support from a villager and council information can be seen there. Alternatively, the village web site is now being regularly updated again as well as our Facebook and Twitter account. Please follow us on Twitter and like our Facebook page:

Twitter: @shimplingpc

Facebook: Shimpling Parish Council

Website: <http://shimplingpc.onesuffolk.net>

Parish Council Meetings during COVID19 procedures

The Parish Council like all organisations have had to change some procedures due to the preventative conditions imposed during COVID 19. Legislation has been passed to allow Local Authorities and Parish Councils to meet remotely, e.g. by video conference to continue with business. So the PC held their first remote meeting on 11th May. This is not a decision that was taken lightly. Members were very aware of the makeup of the village and that many do not have the technology to 'attend' a remote meeting. However, the PC had to meet remotely as there was a planning application to consider and the Planning Authority twice refused to suspend it or grant an extension until the council could hold a normal meeting in public.

All that being said, the first remote meeting seemed to go really well. 19 people attended including 9 members of the public. The council had to purchase the Zoom video conferencing facility to do this but it worked well. The PC have received some positive feedback.

The July 13th meeting is the next scheduled meeting. The PC will inform people how that will take place nearer the time. Two meetings had to be postponed. The Parish Council AGM.

This is largely an administrative meeting to elect officers and review major policies. This has to happen by May 2021 but the PC is hoping to do this at the next opportunity. The Annual Assembly of the Parish. This meeting is an opportunity for the PC to hear about the work of community groups and thank them for their hard work. The PC hope to run this meeting as soon as we can safely gather together again.

What's been happening:

Support for villagers during COVID19

The PC is aware that not everyone in the village has access to computers and the internet to see where support during COVID19 can be found. So early in the crisis the PC arranged for a leaflet drop to every home in the village. This leaflet included useful information about local providers as well as phone numbers to call to request help with shopping for food or medicine. This has become a regular support mechanism and 7 leaflets have now been delivered to the village with further leaflets planned.

The Shimpling Support Group are still available for anyone who needs help with collection of medication (from other GP surgeries/pharmacies) shopping, or if you just need to chat – please call Liz Brunwin on 828122 or Katie Haslehurst on 827370 if you need any help.

Recycling

Please remember that the Parish Council receives money from the paper and glass deposited in the recycling bins near the Bush PH. This income helps to run the council and therefore is a direct benefit to the village and the environment so **please keep recycling.**

Dog Waste Bin

Following a request from villagers. The PC have purchased another Dog Waste Bin to be sighted in Gents Lane. However there will be a delay in implementation as the company that it was purchased from have notified us of delays

Village Spring Clean

The Parish Council would like to thank all the volunteers who came out to support the village by volunteering to help with the Spring Clean up



New Parish Council Member

Following Cllr Dan Sharpstone moving out of the village and resigning, a new councillor was co-opted onto the council. The Parish Council want to express our thanks for the years of voluntary service by Dan and wish him well for the future. The PC welcome Councillor Nathalie Brown to the Parish Council and thank her for taking on this important voluntary role and wish her all the best in her endeavours to support the village.

District Councillors

Our District Councillors usually attend each Parish Council meeting and can also be contacted as follows:

Michael Holt

Phone: 01787 281712

Mobile: 07801 766813

michael.holt@babergh.gov.uk



Stephen Plumb
Phone: 01787 280890
stephen.plumb@babergh.gov.uk



Planning: There have been 5 new applications since our last newsletter in March. Others are updated below:

Application	Shimpling PC Comments	Planning Authority Decision
The Brindles, Aveley Lane, Shimpling	Supported	Approved
Gifford Hall, Hartest Hill	Supported	Approved
Barn at Shimplingthorne	Supported	Approved
Barn at Midway Farm	No issues raised	Approved
Trustrams, Old Rectory Lane	Supported	Awaits
Land South of the Street – Reserved maters application	Objections raised	Awaits



Three Coronavirus Reflections ...

A number of people I have spoken to have said that they are not sleeping very deeply at the moment. It is not necessarily that they are anxious, or because the days are getting longer, or indeed because the dawn chorus has been wonderful. It is because our minds have a lot to adjust to each week as the coronavirus situation changes, and our minds are playing catch-up as we try to process all that has happened. Here are three of my reflections from when I have tried to nod off in the last week or so ...

Firstly, I have been heartened by the wonderful ways our communities have responded. Almost everyone has risen to the challenge of looking out for their neighbours. In addition to this our villages have also responded in more structured ways. In Alpheton there is a WhatsApp group. In Long Melford there is a Facebook group and a team of volunteers available to help any in need. In Shimpling there are regular newsletters and other on line resources. There is much more besides. Again and again I hear people saying how fortunate they feel to live here, due to the community, and of course due the beautiful environment we can all enjoy. If God is present when we love our neighbour, then we have arguably been closer to God in recent weeks.

I have also been reflecting that this has been a season of contrasts. Indeed as we commemorated VE day a couple of weeks ago I found myself wondering what it must have been like for the aircrews on the local bases. They flew out regularly exposing themselves to extreme danger; those who survived landed back in tranquil rural Suffolk. What extremes aircrews must have experienced within the



space of 24 hours. Likewise for some of us the recent weeks have been fraught with the stress of working on the front line, or losing our jobs, or sadly having to mourn the loss of a loved one. At the same time many of us are tending our gardens and 'enjoying' lockdown. These extreme contrasts are not easy to get our heads around.

Thirdly, we are all starting to wonder, and perhaps worry about, what the 'new normal' is going to be like. Whereas in many ways it has been terrible, in other ways I think we have rediscovered our humanity and what is really important. Undoubtedly there is going to be a re-calibration of all sorts of things.

As just one small example of what has changed I was struck last week when I was contacted by a couple in their 80's whom I have never actually met; they wanted reassurance that we would continue livestreaming our services after the lockdown was lifted. Three months ago who would have believed that such conversations would happen?

(For the record we do plan to continue livestreaming – just Google 'Holy Trinity Long Melford Facebook' at 10.30am on Sunday and you will get there – you do not need to join Facebook to watch. We do hope that our churches will be open for private prayer and services soon – see www.alphetonandshimplingchurches.org.uk for the latest information). One of our parishioners has written the poem below which I think helps us to reflect on what things will be like going forward.

I am sure you have had many more reflections than these, and yours are probably more profound and insightful; I hope we can share them sometime. I certainly consider



THE PARISH OF ALPHETON AND SHIMPLINGTHORNE

myself grateful to live in this community and can I thank you for the part you have played in bringing me closer to God. My prayer is that we will be able to embrace the good that has come out of this situation,



Finally, I am reminded that Jesus told us not to worry because each day has enough worries of its own. So I pray that we will have the strength and faith to face each day ... and that we will be able to sleep well!

Rev Lawson

Rector: Rev'd Matthew Lawson 01787 310845,

Churchwardens:

Charlotte Blyth 01284 827008

charlottefblyth@btinternet.com

www.alphetonandshimplingchurches.org.uk

Shimpling Services

Are suspended as per HM Govt guidelines

Services from Long Melford can be viewed via

www.longmelfordchurch.com

(Scroll down to the Facebook Link)

Please contact

charlottefblyth@btinternet.com

For more events and services, don't forget to look at our website www.alphetonandshimplingchurches.org.uk.

A Coronaverse, by Tim Barker

The dreaded virus is here to rage
Without regard to sex or age
Until we either live or die.
But when we win this lengthy duel
All of us and those who rule
Will need once more to think anew
The ways in which we live our lives;
The wanton appetite that drives
Mankind to put the earth at risk.
When we at last regain our health
We must all try to share our wealth
To benefit mankind.
We'll go far less, I hope by 'plane
And maybe travel more by train
Or spend the time at home.
We've learnt perhaps that people are
Much greater than any thing by far,
And need much more respect.
And more than that we must ensure
That all of us, both rich and poor,
Share from the same table.



Please join our livestream services every Sunday at 10.30am

Family Services are on the 7th Jun, 5th Jul, & 2nd Aug.

Community Thanksgiving Service - 5th July (tbc).

Midweek Communion – Wed 17th Jun, 15th Jul, 19th Aug, (10am)

Loads more for children ... stories, crafts, games, etc.

Please contact Pam: melfordfamilyworker@gmail.com, 07890 880 976 to join our 'Children at Church' Facebook group.

Livestream Directions:

1. Google the words "Holy Trinity Long Melford Facebook"
2. Click on the top link which takes you to the Holy Trinity Facebook page.
3. Scroll down a bit ... service should be there.
4. Note that you do not need to join Facebook, and you can watch it later.

No internet? Service phone in:

This uses a 0333 number which should be free if you have free weekend calls or are within free mobile minutes:

Dial: 0333 0110 946,

Room number: 20966931#,

Guest PIN: 5252#.



A message from Alpheton & Shimplingthorne PCC

We are already missing our Alpheton and Shimpling church services but you will all understand the reason why this action has been taken. So that we can continue to worship and keep in touch with one another, the church is continuing in a different form and we do hope that you can join our Services which are being livestreamed at 10.30am every Sunday. You can find the Services on the Long Melford Church website at www.longmelfordchurch.com and clicking on the words "Long Melford Church" at the top of the Facebook section.

We appreciate that keeping the church going financially may not be top of your priority list at the moment. Nevertheless, we must still support the costs of our ministry and pay our bills and therefore we would like to request that if you normally put your offering on the plate, whether you would consider donating to us in a different way?

Donations may be made directly into our bank account if you are able to do so, or by standing order: either would help us maintain our regular income. We also welcome donations made by cheque but this may be difficult to process. Our bank details are :- Alpheton and Shimplingthorne PCC; Sort Code 60-04-16; Account No 56293658. Cheques can be sent to our treasurer Sue Fahie-Wilson at Chiltern House Shimpling. Alternatively, there is now a telephone service to set up a direct debit, for those wishing to make a regular donation. Please contact Sue for more details

(s.fahiewilson@gmail.com ; 01284 827243)

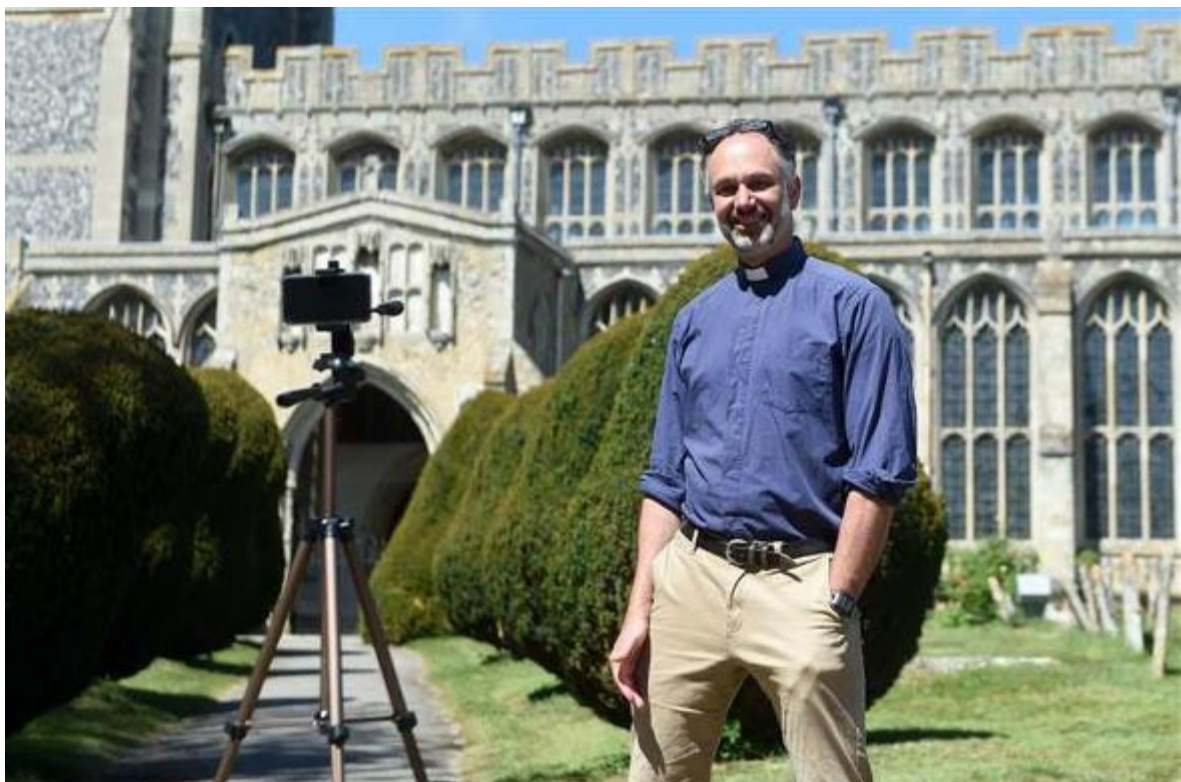
Be assured that whatever you are able to give during these difficult times will be put to good use and greatly appreciated by all at Alpheton & Shimpling. Of course, this would be only after considering your own needs, which may have changed in the current situation.

Wishing you all the best, keep well and keep safe.
Remember that we are here to help and support you.
Blessings and prayers

Daily Hope Prayer hotline

There is a **24-hour free telephone line** for Christian worship and prayer which has been organised by the Church of England. All you have to do is call **0800 804 8044**. People calling the free number will hear a greeting from Justin Welby Archbishop of Canterbury and can then choose from a range of options including hymns, prayers, reflections and advice on Covid-19. It has been set up particularly with those unable to join online church services during the period of restrictions in mind.

www.suffolkfreepress.co.uk/news/long-melford-church-keeps-community-spirit-alive-with-online-services-during-coronavirus-lockdown-9110611



Save the Date

Village Fete **Thorne Court** **Shimpling** **12th September 2020**



**If you are interested in being on the Fete
Committee or helping in any way, please
contact Charlotte Blyth
charlottefblyth@btinternet.com**

The Halifax Trust

Grants available for young people at college or Uni, must be under 25, have attended the primary school serving Shimpling and Alpheton, or have parents currently living in Shimpling. Funding is also available to help with travel costs for 6th Formers and for other village projects.

Help us to Help our Children

If you are interested in making a donation or legacy, please get in touch.

Contact the Secretary hallifaxtrust@gmail.com

Jayne Schofield jas.65@btinternet.com

01284 828322

jennypine@aol.com 01284 827073

(Registered Charity No 310396)



Suffolk Historic Churches Trust Ride and Stride

Saturday 12th September 2020

Sponsor forms can be picked up from the church or the local organizer. Funds raised will be divided between SHCT and the church or chapel chosen by the participant.

Jenny Pine, The Street, Shimpling,

01284 827073 jennypine@aol.com

(SHCT Registered Charity No 267047)



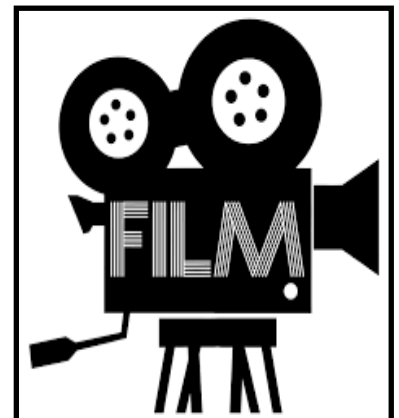
Christian Aid week took place between 10 and 16 May. St Georges Church, Shimpling supports the work of the charity involved in emergency relief and development projects throughout the world. At this time of Covid-19, it is helping many people to alleviate the effects of the disease in many countries. Normally the C.A. week is marked by the distribution of envelopes house to house in this village and throughout the UK. If you would like to donate to its work or find out more please go to christianaid.org.uk. Thank you.

Copy for the Autumn2020 issue is required by
20th August 2020
Submit copy (preferably in A4 WORD) format to:
sarah@slsconsulting.org.uk
Vine Cottage, Gents Lane, Shimpling, IP29 4HP
01284 828035

Forthcoming Films at Alpheton Village Hall

June 16th Mrs Lowry & Son
July 21st Downton Abbey
August 18th Judy (Garland)

7.30pm Start, £4 entrance including tea/
coffee & biscuits, licenced bar



VE Celebrations and Memories

We had a double celebrations on Friday 8th May, as it was also John's birthday. The house was decorated and a cream tea enjoyed. The plans we had made were all changed, but then sun shone and it was a lovely day.

John was just 4 when the war ended, but he has very clear memories of a day when he was playing with his brother in the living room of their home in Woolwich, SE London. His mum heard the dreaded sound of a doodle bug (V1 rocket) approaching, she scooped both Brian and John into the Morrison shelter, following them quickly. Seconds later there was an explosion, the rocket had landed behind the house, shattering all the windows and causing substantial damage. Fortunately his mum kept an old rug over the shelter, which saved them from the flying glass and debris.

He then remembers a while later, lots of shouting and people digging through the rubble to get the family out. He is sure that, but his mum's quick action and Herbert Morrison's indoor shelter, they would not have survived.

I was born a year after the war, but remember all family conversations about various events, always beginning 'before the war', 'during the war', 'after the war'. My dad had eight brothers and one sister surviving childhood. Throughout the war he was a policeman in Bow, East London, his brothers served in either the army or navy, except his youngest brother, Bob who was in a reserved occupation.

However, in 1943 he joined 102 Squadron RAF Volunteer Reserve and became a wireless operator, based with bomber

command Skellingthorpe in Lincoln, flying night missions. His plane was shot down on 25th June 1944, he was 23 years old and had been married for less than a year. He and his crew are buried in Fontaine L'Etalon Churchyard, Pas de Calais.

I still have the telegram sent to my nan, with the news, (which had been received from the International Red Cross), it was believed he had been killed as a result of air operations, offering profound sympathy adding that his wife had been informed.

All the remaining brothers returned home safely. Mum, dad and my sister were 'bombed out' and they were paid the sum of £131.10s, for which I have the V.O.W 15A form confirming the payment!

Although Bob died before I was born, I always felt I knew him, having heard what a kind and lovely young man he was. My eldest son had the middle name of Robert, in his memory and over the weekend I made sure that a copy of his details from the War Graves Commission was in our window, together with a lighted candle.

So although we celebrated the peace and enjoyed our day, we remembered the sacrifices made by so many to achieve it, some of whom will be known to other readers. We should never forget.

Bless 'em all.

Marian Peck



**VE Day
Celebrations
May 2020**





Electronic Version of The Shimpling News

The Shimpling News is now available on the Village Website so if you would prefer to receive an email informing you when the latest issue is available, rather than have a printed copy delivered to your door (by the dedicated local Distribution team !) please let me know so that we can reduce the number of printed copies we produce. This will all help to reduce the cost to the Parish Council and less printing means less carbon resources used— a win/win situation ??

Email: sarah@slsconsulting.org.uk to register for notifications

Village Hall Committee

The decision to close the village hall was made very quickly following the lockdown. It was thoroughly cleaned, bins power washed, ready for re-opening at some point, which is still unknown.

The committee was sorry to have to cancel forthcoming events, no St George's Day, a planned curry evening, VE meal at the Bush, followed by our usual Shimpling Celebrates, including the cart race. AGMs cancelled. However, when we know what the new conditions are for re-opening all such buildings, we will get back to planning for the future.

Let's hope it won't be too long before Shimpling can Celebrate and we can all enjoy being with each other once again, even if socially distanced.

Marian Peck
Chair VHMC

Village Hall Hire Charges

	<u>Summer</u>	<u>Winter</u>
Half Day—Morning or afternoon up to 6pm		
Mon-Thurs	£20	£25
Fri-Sun	£26	£31
Evening from 6pm to Midnight		
Mon-Thurs	£26	£31
Fri-Sun	£38	£43
Concessions (Subject to Approval)		
All sessions	£18	£20
Hourly Rate per hour (max 3 hrs)		
Mon-Thurs	£5	£6
Fri-Sun	£6	£7

Sessions AM 8am—1pm
 PM 1pm—6pm
 Evening 6pm—midnight

Summer period 1st April to 30th September

Winter period 1st October to 31st March

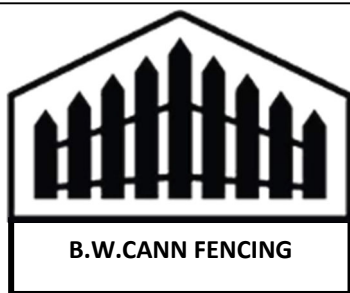
Rates available to village residents & for village events.

Hire Enquiries – Contact Stan Milsom on 01284 828866

BOTTLE & PAPER BANKS

By placing your empty bottles and papers in the bins provided near The Bush Pub, we receive money for the village community. Keep these telephone numbers handy so that if the Banks are full you can help by phoning and having them emptied.

BOTTLE BANK— 01842 820804 PAPER BANK—01473 830948



B.W.CANN FENCING

Est. over 30 years

Industrial or Domestic

'No job too big or too small'

***All work undertaken, including,
Paddock, Chain Link, Panels, Gates
and Palisade and much more!***

**For a FREE quote
Call or email today on....**

Landline: 01284 831 073

Mobile: 07949 107 920

Email: tool-den@hotmail.co.uk

BLUEBELL BUILDING NOW OPEN

We believe in a fun and active path for early years education, allowing the children in our care to develop at their own pace, in a safe environment with activities they love.

We are located within the grounds of All Saints' Primary School in Lawshall, Suffolk.

Our mission is to help each child make the transition from preschool to reception and onwards into the main school with confidence and ease.

Accepting children from the term after their 2nd Birthday.

Full day sessions available 8:30 - 3:30



Chiropodist

Established & locally based

(Alpheton)

- Quality foot care
- Caring service tailored to your individual needs
- Expert advice
- Experienced with additional nursing qualification

If you are unsure as to whether chiropody is for you, please do not hesitate to contact me.

Elizabeth Gibson

MSSCh MBChA

Health & Care Professions
Council Registered
• Reg. No. CH20192



CLINIC

Casabella

Hall St. Long Melford
CO10 9HY

T: 01787 370300

HOME VISITING PRACTICE

Long Melford, Sudbury, Clare
& surrounding villages.

T: 01284 827380 M: 07798 806184

Alice's

'I'm very pleased with my products and efficient service'
Jenny Pine, Shimpling

AVON
Store

For all your beauty and skincare essentials
shop online at Alice's AVON store

Free direct delivery on orders over £20

Stay fresh and fabulous

<https://www.avon.uk.com/store/mackenzie-shop/>

PEST PROBLEMS SOLVED BY LOCAL SPECIALIST

Anglia DOMESTIC • COMMERCIAL • AGRICULTURAL
PEST MANAGEMENT



insects✓ birds✓ moles✓ rabbits✓ rats✓

Based in Lawshall
Contact Tim Cox

- 24hr call out / 7 days a week
- Contract or individual treatments
- Traditional methods with modern technology
- Discreet service - unmarked vehicles
- RSPH and BCPA trained and qualified
- NPTA member
- £5million public liability



01284 831 042
07776 205 346

info@angliapestmanagement.co.uk ■ www.angliapestmanagement.co.uk

Marquee for Shimpling

*The Marquee 20ft x 40ft (6.1m x 12.2m)
is available for loan to
anyone in the village of Shimpling for functions
*free of charge.**



*Please note the Marquee can be erected on **Soft Ground** not hard ground . **Installation Instructions and list of parts are available.**
Volunteers are sought to help erect/dismantle the Marquee free of charge for communal events such as the Church, Village Hall, Pub, Fêtes, etc*

Please contact gabriel@clara.net at Thatch End to book the Marquee.

ARGENT GARDEN MACHINERY SERVICES



Servicing and repairs to all types
of machines

Parts supplied
Local Collection and Delivery service available



Contact Luke on
Tel: 01787 372885
Mobile: 07791 281855
argent1985@hotmail.co.uk
redrose993@hotmail.com



LARK VALLEY YOUNG FARMERS' CLUB

*Are you bored of staying in on a Friday night?
Looking for something fun to do?
Aged between 10 and 16?*

Lawshall Village Hall, Fridays, 7.00-9.00pm

Take part in competitions: Make new friends

Be part of a national organisation that makes a difference
- And you don't have to come from a farming background!

*More information from County Office on
01473 785547
office@suffolkyoungfarmers.com*



**Ollie's Pet Care
(Oliver Schofield)
Covering Shimpling and Alpheton**

For the past 5 years Ollie's Pet Care has helped many pet owners in the village of Shimpling, from a one-off feed to a months pet care.

I offer a bespoke service.

Bins, post and small gardening jobs can also be considered. If you are going away for a night, or going on holiday, contact me and I may be able to solve your pet care problem !

**Rabbits, Hamsters, Guinea Pigs, Fish
Birds, Dogs, Cats, Chickens etc**



To find out more please contact me
01284 828322 / 07813 762799
scoi14@hotmail.co.uk

**Your Charity needs
you....**

We are offering the village hall free once a month to anyone who wants to put on a fund raising event for their favorite charity. We can also help with organising and promoting your event. Contact Bernard Essery for more details.

Bernard.Essery@gmail.com
Tel 827196





Singing Flute, Piano

(Also Celtic Harp, Violin, Ukulele, Guitar and Viola)

***Lessons in Shimpling Suffolk
Also Online Zoom lessons***



Qualified, experienced, patient and enthusiastic teacher with CD recording facility

***Beginners to professionals welcome
for leisure, audition, performance preparation and/or
Associated Board of the Royal Schools of Music exams***



Gift Tokens Available

***Telephone Adriene or Text on
07760 238462***

www.musicteachers.co.uk

*GTCL. LTCL - Singing; Flute; Piano Teaching Diplomas
ARCM Associate of the Royal College of Music, Singing Performance
Member of the Association of Teachers of Singing*

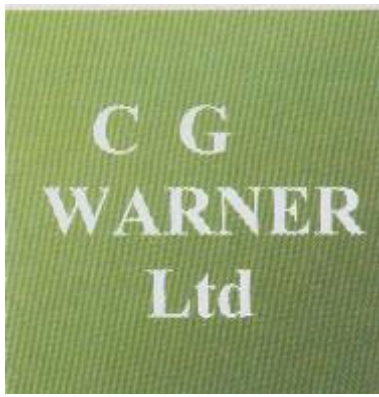


STEVEN KENT M.A
Fine Artist

Tel: 01284 828836
Mob: 07815 455 268
Email: skart@hotmail.co.uk
www.stevenkentartist.com

Keeping in touch...

*If you wish to
receive email
communication about
what is going on in the
village please email
lizbrunwin@hotmail.co.uk
who will add you to the
circulation list.*



DOMESTIC & COMMERCIAL CONTRACTING

**1 Cordell Cottages,
Little Chadacre, Shimpling,
Bury St Edmunds,
Suffolk IP29 4HL**

Tel 01284 828774 Mobile 07971 248320

Email: cgwarner@btinternet.com

- Hard & Soft Landscaping
- Patios & Driveways
- All types of Domestic, Agricultural & Commercial Fencing
- Seasonal Hedge / Garden Maintenance



- Ménage Construction
- Supply & Installation of Grass reinforcement matting
- Lawnmower servicing & repairs
- Grass Cutting
- Paddock Maintenance

- Stump removal
- Firewood
- NPTC qualified Tree Surgeons
- Woodland Management
- Tree / Hedge Planting



Fully Insured

40 years + experience

FREE NO OBLIGATION QUOTES



Oakwood Gardening Services

Based in Shimpling

All work undertaken, including, lawn cutting, hedge cutting, strimming, pruning, weeding, garden clearance, leaf clearing, furniture maintenance, power washing, fence repairs, grave tending and much, much more!

High Standard Reliable Gardening Service

For a **Free Quote**

Call today on



01284 827 604 | 07903 487 662



oakwoodgardening@gmail.com

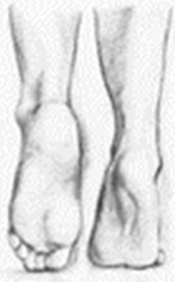


www.oakwoodgardeningsservices.co.uk



Oakwood Gardening Services

Fully insured | Enviroment Agency waste carriers licence



Claire St John

Dip (Hons) WMSch ChPod

Assoc of Inst of Chiropody & Podiatry

Make your feet happy again

Professional, friendly, reliable Foot Health
Practitioner with 15 years' experience

Regular or one-off appointments in the comfort of
your home.

Treatments include:

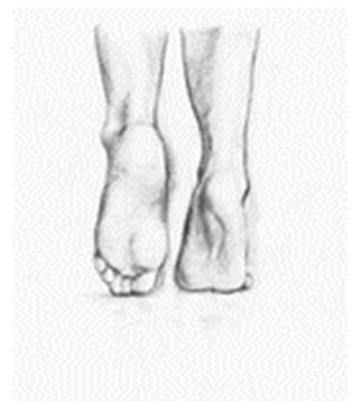
Hard skin removal
Nail cutting/trimming
Cracked heel care
Corns/Verruca's removed
Cream/Massage treatment

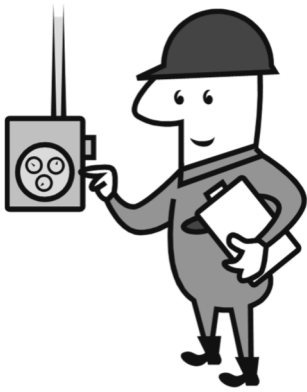
Please call today to arrange an appointment:

W: 01359 258 227

M: 07780 638 188

E: claire.stjohn@icloud.com





Domestic, Commercial & Agricultural Electrical Work Undertaken

Including rewires, new builds, extensions,
Economy 7 heating, new consumer units,
testing and inspection for insurance purposes,
smoke detectors, TV & phone points, outside
lighting, low energy & LED lighting, Burglar alarms supplied
& fitted.

Part P recognised, 17th Edition Regulations qualified

All work guaranteed by the ECA

For competitive rates, a personal service and
good quality workmanship contact:

Kevin Seggie Electrical Services

Beechwood Cottage, Bury Road, Lawshall, IP29 4PJ
01284 830786 / 07768 108157

HAPPY TO HELP Garden Services



Call David on 01284 828127



We are two brothers who are passionate about the work we do, to please all with the quality of work and skill we provide, we are only happy if the customer is happy. Between us both we have extended experience in the building trade, we have worked in the past with a small building company building high quality and top spec houses, with over 15 years of experience and employment, (which we were very grateful for) we decided the time was only right to please others under our own name of Reynolds Building & Garden Services.....

These are a few of the services we provided,



plastering, tiling, ground works, landscaping, garden design and build, small extensions, and a small amount more.....

View our portfolio at www.Reynoldsbgs.co.uk

Contact us on; Mobile 07731451209

Office 01284 828621

Woodcot

Garden Services

**Lawn Cutting
Hedge Trimming
Patio Cleaning
Garden Clearance
&**

General Garden Maintenance

Contact Chris Cornish on

Tel 01284 828809 - Mobile 07880 976137

c.cornish123@btinternet.com

Woodcot, The Street

SHIMPLING

